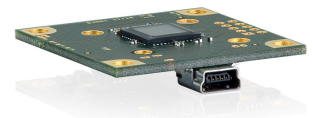
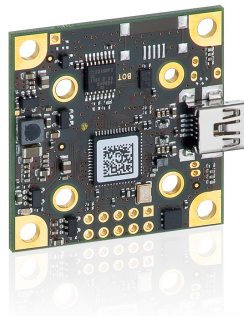
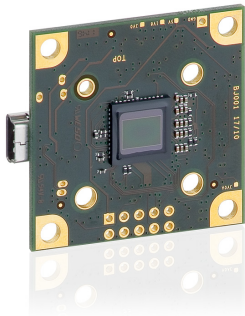


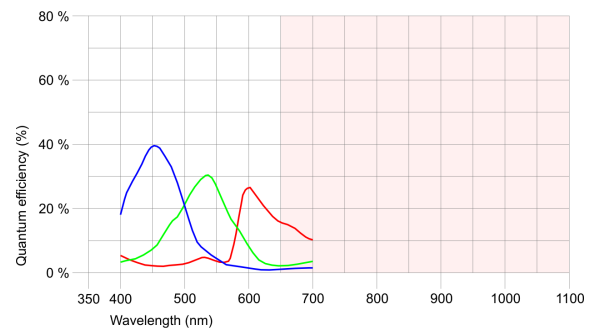
## UI-1492LE-C



## Specification

### Sensor

Sensor Technology	CMOS Color
Manufacturer	Aptina
Resolution (MPix)	10.55
Resolution (h x v)	3840 x 2748
ADC	12 bit
Color depth (camera)	8 bit
Pixel Class	UHD+
Sensor Size	1/2
Shutter	Rolling shutter
max. fps in Freerun Mode	3.2
Binning Modes	Color
Subsampling Modes	Color
Sensor Model	MT9J003STC
Pixel size	1.67 $\mu\text{m}$
Optical Size	6.413 mm x 4.589 mm
Optical sensor diagonal	7.89 mm (1/2.03")



### Design

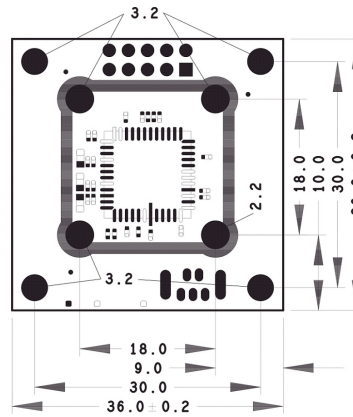
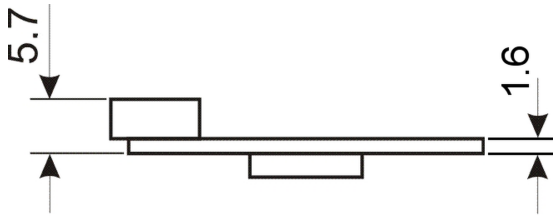
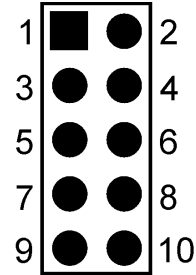
Interface	USB 2
Lens Mount	-
I/O In	1 x TTL
I/O Out	1 x TTL
I/O RS-232	-
I/O GPIO	2
I/O I <sup>2</sup> C	1
IP code	-
Dimensions H/W/L	36.0 mm x 36.0 mm x 5.7 mm
Mass	12 g
Power supply	USB Cable

Subject to technical modifications

## UI-1492LE-C

### Pin assignment I/O connector

1	USB Power supply (VCC) 5V
2	USB Ground (GND)
3	Digital input (-)
4	Digital output (+)
5	Power supply (internal voltage transformer) 3.3V
6	USB Ground (GND)
7	GPIO1
8	GPIO2
9	I2C bus clock signal
10	I2C bus data signal



## UI-1492LE-C

