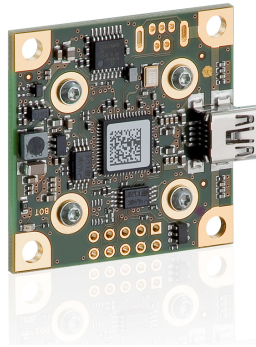
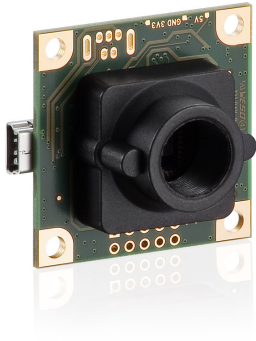


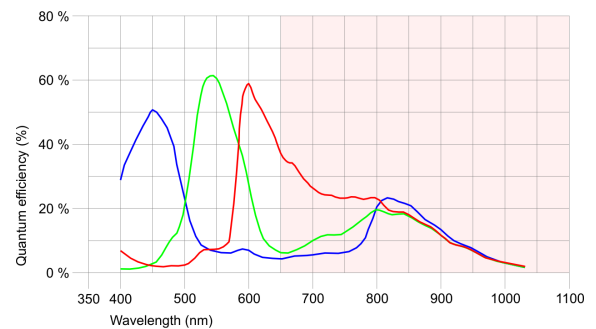
UI-1581LE-C-HQ



Specification

Sensor

Sensor Technology	CMOS Color
Manufacturer	Aptina
Resolution (MPix)	4.92
Resolution (h x v)	2560 x 1920
ADC	12 bit
Color depth (camera)	8 bit
Pixel Class	QSXGA
Sensor Size	1/2
Shutter	Rolling shutter/Global start shutter
max. fps in Freerun Mode	6.3
Binning Modes	Color
Subsampling Modes	Color
Sensor Model	MT9P006STC
Pixel size	2.2 μm
Optical Size	5.632 mm x 4.224 mm
Optical sensor diagonal	7.04 mm (1/2.27")



Design

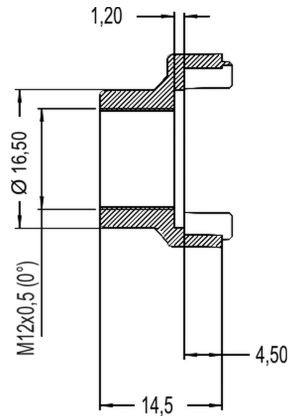
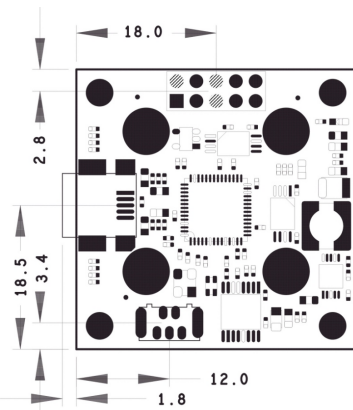
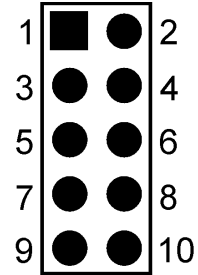
Interface	USB 2
Lens Mount	M12-long
I/O In	1 x TTL
I/O Out	1 x TTL
I/O RS-232	-
I/O GPIO	2
I/O I ² C	1
IP code	-
Dimensions H/W/L	36.0 mm x 36.0 mm x 20.2 mm
Mass	16 g
Power supply	USB Cable

Subject to technical modifications

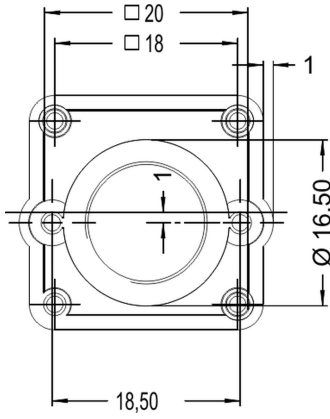
UI-1581LE-C-HQ

Pin assignment I/O connector

1	USB Power supply (VCC) 5V
2	USB Ground (GND)
3	Digital input (-)
4	Digital output (+)
5	Power supply (internal voltage transformer) 3.3V
6	USB Ground (GND)
7	GPIO1
8	GPIO2
9	I2C bus clock signal
10	I2C bus data signal



UI-1581LE-C-HQ



Subject to technical modifications

Page 3 of 3

<http://www.ids-imaging.com>