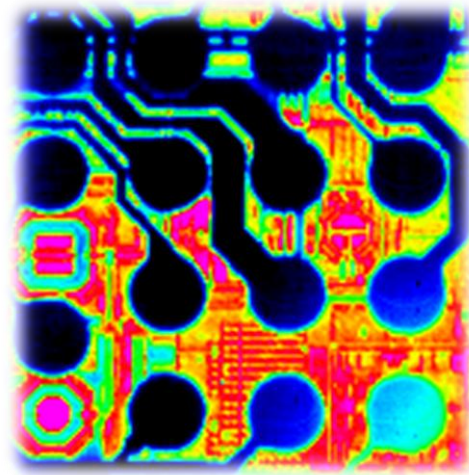
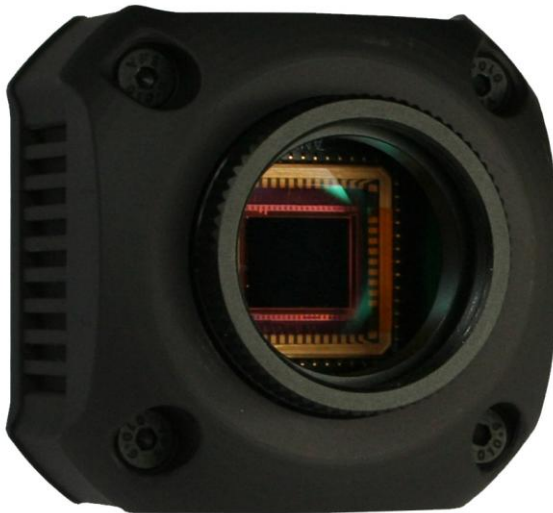


WiDy SWIR 640U-S



Wide Dynamic Range up to 140dB

Near Infrared Imaging (900 - 1700nm)

640 x 512 Pixels Resolution

Ease your design with Native WDR™



Key Features

- **Native WDR™**: Intrinsic wide dynamic range
 - no knee points to setup or multiple exposures
 - 140 dB in a single shot.
- High QE InGaAs global shutter (900nm to 1700nm) & in pixel CDS **NEW**
- VGA resolution , 640*512 effective pixels, 15 µm square pixels
- User friendly windows based (GUI) **NEW**
- USB 2.0 interface for power and data transfer

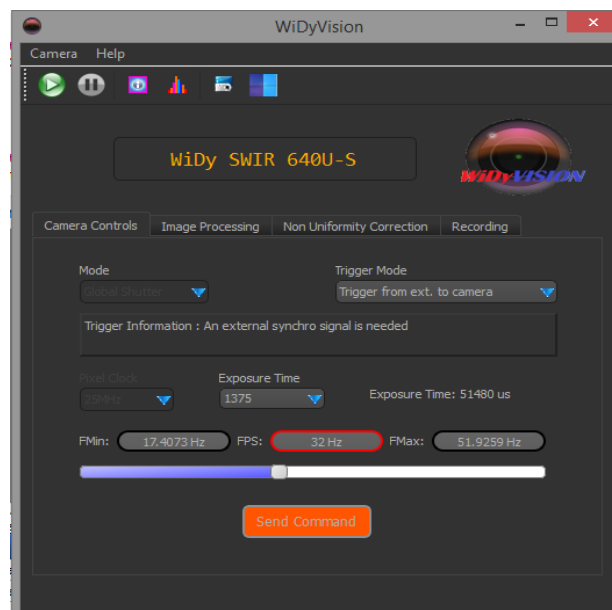
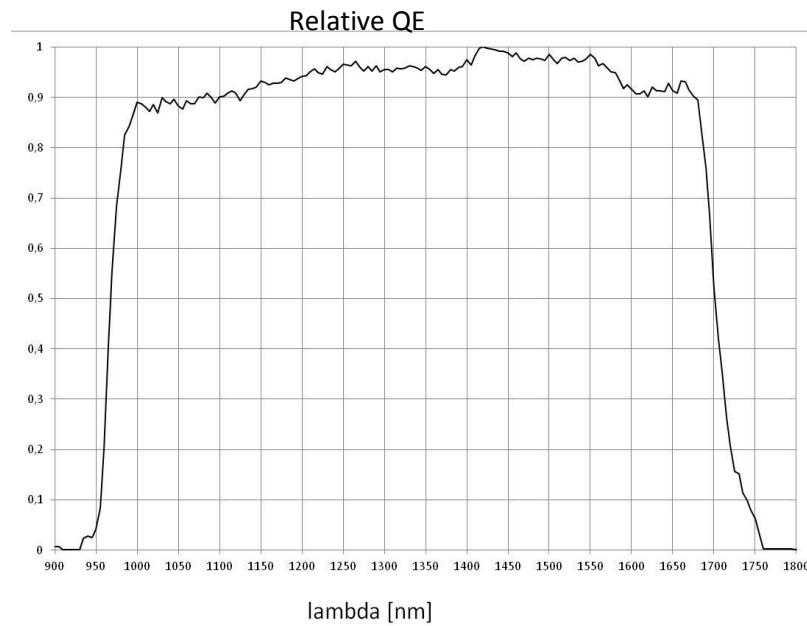
Applications

- Industrial NIR imaging (pharmaceutical, food, welding...)
- Laser instrument
- Semiconductor
- Agricultural
- Process Control

WiDy SWIR 640U-S camera makes use of new sensor NSC1201-SI (VGA, global shutter), delivers digital videos via USB 2.0 interface and can be triggered. It is delivered as a turn-key package including camera, cables and a new software **WiDyVISION** package with more functions allowing thus a quick and easy integration in any equipment or vehicles platform.

Technical Specifications

- **Sensor:** NSC1201-SI
- **Resolution:** 640x512 pixels
- **Operating mode:** Global shutter
- **Materials:** InGaAs
- **Pixel size:** 15umx15um
- **QE:** 80%
- **Dimensions:** 49 * 49 * 33 mm
- **Data output :** 14 bits USB 2.0
- **Dynamic Range:** >140dB
Logarithmic response
- **Lens mount :** CS /C mount
- **A/D converter:** 14 bits
- **Frame rate:** up to 60 fps
- **Compatibility** Windows XP/Win Vista/7/8
- **Operating Temp:** -40°C to + 70 °C



www.new-imaging-technologies.com

Products and specifications are subject to change without notice.

WiDy SWIR -640U-S-Flyer-V1.1

DOPCP22007V01

WiDyVISION Software

NIT

1 Impasse de la noisette, Bat D-1^{er} Etage
91370 Verrières Le Buisson, France
Tel +33(0) 1 64 47 88 58
info@new-imaging-technologies.com

