

# pc<sub>o</sub>.panda 26

ultra compact global shutter  
sCMOS camera

available in  
mono and color

dust-protected  
housing

65 mm

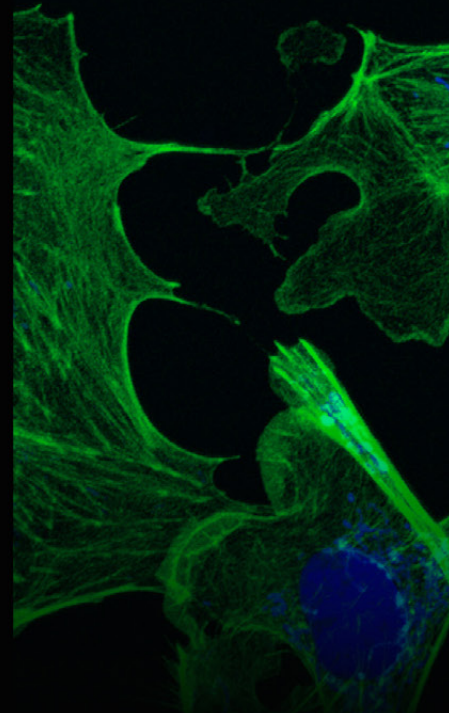
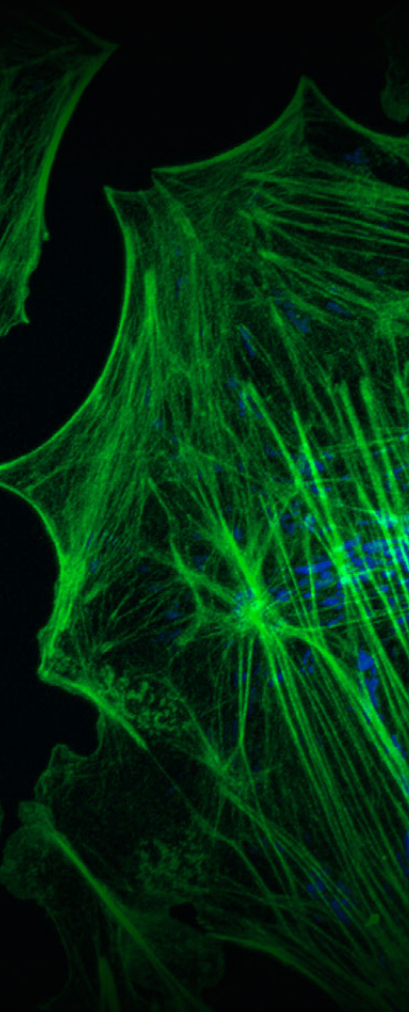
ultra  
compact  
design

high resolution  
5120 x 5120 pixel

true charge domain  
global shutter

1288   
EMVA Standard Compliant

# pc<sub>o</sub>.



» sCMOS image sensor

<b>type of sensor</b>	global shutter scientific CMOS (sCMOS) monochrome
<b>resolution (h x v)</b>	5120 x 5120 active pixel
<b>pixel size (h x v)</b>	2.5 $\mu\text{m}$ x 2.5 $\mu\text{m}$
<b>sensor format / diagonal</b>	12.8 mm x 12.8 mm / 18.1 mm
<b>shutter mode</b>	global/snapshot shutter (GS)
<b>MTF</b>	200 lp/mm (theoretical)
<b>fullwell capacity</b>	4500 e <sup>-</sup>
<b>readout noise (typ.)<sup>1</sup></b>	2.3 med e <sup>-</sup> / 2.5 rms e <sup>-</sup>
<b>dynamic range (typ.)</b>	66 dB
<b>quantum efficiency</b>	65 %
<b>spectral range</b>	320 nm .. 1000 nm
<b>dark current (typ.)</b>	3 e <sup>-</sup> /pixel/s @ 21 °C ambient temperature
<b>DSNU</b>	< 1 e <sup>-</sup> rms
<b>PRNU</b>	< 1.2 %
<b>parasitic light sensitivity</b>	1 / 10000

» camera system

<b>frame rate</b>	7.1 fps @ full resolution
<b>exposure / shutter time</b>	5 $\mu\text{s}$ .. 20 s
<b>dynamic range A/D</b>	12 bit
<b>A/D conversion factor</b>	1.1 e <sup>-</sup> /DN
<b>pixel data rate</b>	267 Mpixel/s
<b>binning horizontal</b>	x1, x2, x4
<b>binning vertical</b>	x1, x2, x4
<b>region of interest (ROI)</b>	horizontal: steps of 32 pixel (min. 32) vertical: steps of 1 pixel (min. 8)
<b>non linearity</b>	< 0.6 %
<b>cooling method</b>	passive cooled
<b>trigger input signals</b>	frame trigger, sequence trigger, programmable input (SMA connectors)
<b>trigger output signals</b>	exposure, busy, programmable output (SMA connectors)
<b>data interface</b>	USB 3.1 Gen 1
<b>time stamp</b>	in image (1 $\mu\text{s}$ resolution)

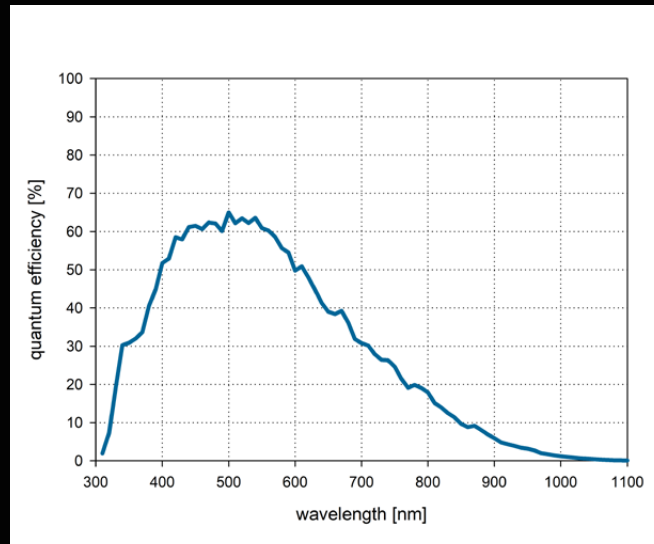
<sup>1</sup> The readout noise values are given as median (med) and root mean square (rms) values, due to the different noise models, which can be used for evaluation. All values are raw data without any filtering.



» general

power delivery	power over USB 3.1 Gen 1
power consumption	typ. 4.5 W (max. 6.0 W)
weight	600 g
operating temperature	+ 10 °C .. + 40 °C
operating humidity range	10 % .. 80 % (non-condensing)
storage temperature range	- 10 °C .. + 60 °C
optical interface	F-mount, C-mount
CE / FCC certified	yes

» quantum efficiency

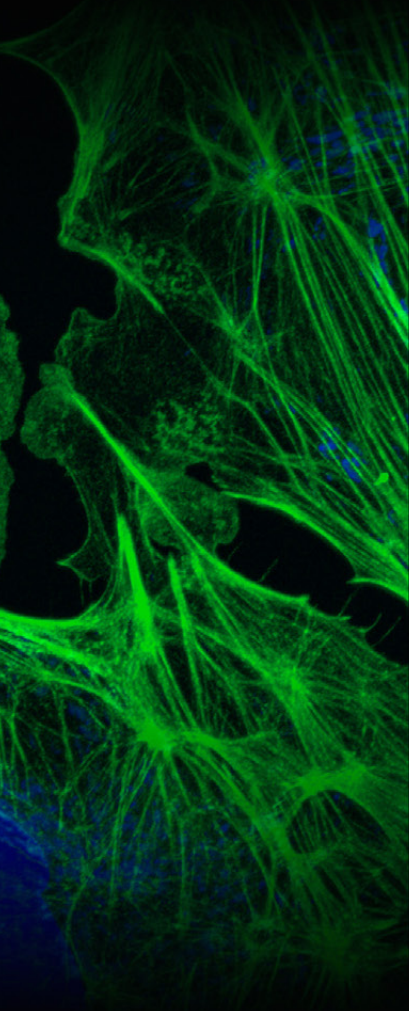


» frame rate table

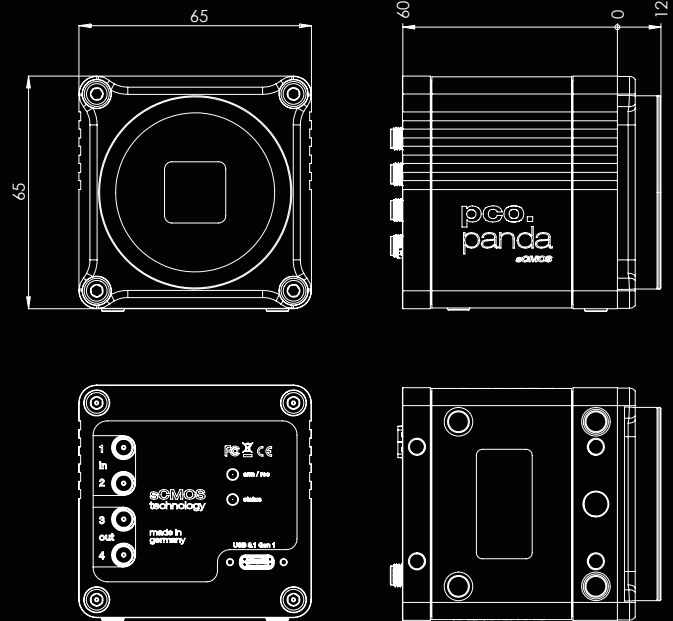
5120 x 5120	7 fps
5120 x 1024	35 fps
5120 x 512	70 fps
5120 x 256	141 fps
5120 x 128	279 fps
1920 x 1080	33 fps
1600 x 1200	30 fps
1280 x 1024	35 fps
640 x 480	75 fps
320 x 240	150 fps

» benefits

- ultra compact design
- sealed electronics for dust & dirt protection
- spider-less mounting with only 6.18 mm to image plane

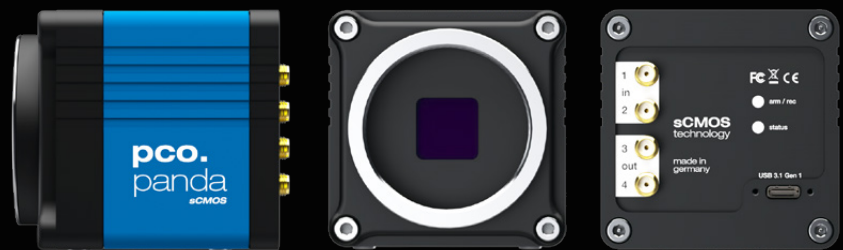


» dimensions



F-mount and C-mount lens adapter are changeable.  
All dimensions are given in millimeter.

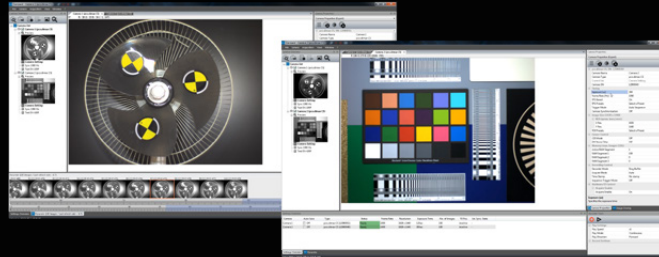
» camera view



» applications

brightfield microscopy | fluorescence microscopy | digital pathology | mesoscopy (low magnification microscopy) | high-speed bright field ratio imaging | high throughput screening | high content screening | biochip reading | spinning disk confocal microscopy | 3D metrology | industrial quality inspection

» software



With pco.camware you control all camera settings, the image acquisition and the storage of your image data. The pco.sdk is the complementary software development kit. It includes dynamic link libraries for user customization and integration on Windows-PC platforms. Drivers for popular third party software packages are also available for you.

All this items like pco.camware, pco.sdk and third party drivers, are free-to-download at [www.pco.de](http://www.pco.de).

» third party integrations



## contact

### europa (HQ)

PCO AG  
Donaupark 11  
93309 Kelheim, Germany

+49 9441 2005 50  
info@pco.de  
pco.de

### america

PCO-TECH Inc.  
1000 N West Street, Suite 1200  
Wilmington, DE 19801

+1 866 678 4566  
info@pco-tech.com  
pco-tech.com

### asia

PCO Imaging Asia Pte.  
3 Temasek Ave  
Centennial Tower, Level 34  
Singapore, 039190

+65 6549 7054  
info@pco-imaging.com  
pco-imaging.com

### china

Suzhou PCO Imaging Technology Co., Ltd.  
Room A10, 4th Floor, Building 4  
Ascendas Xinsu Square, No. 5 Xinghan Street  
Suzhou Industrial Park, China 215021

+86 512 67634643  
info@pco.cn  
pco.cn



for application stories  
please visit our website